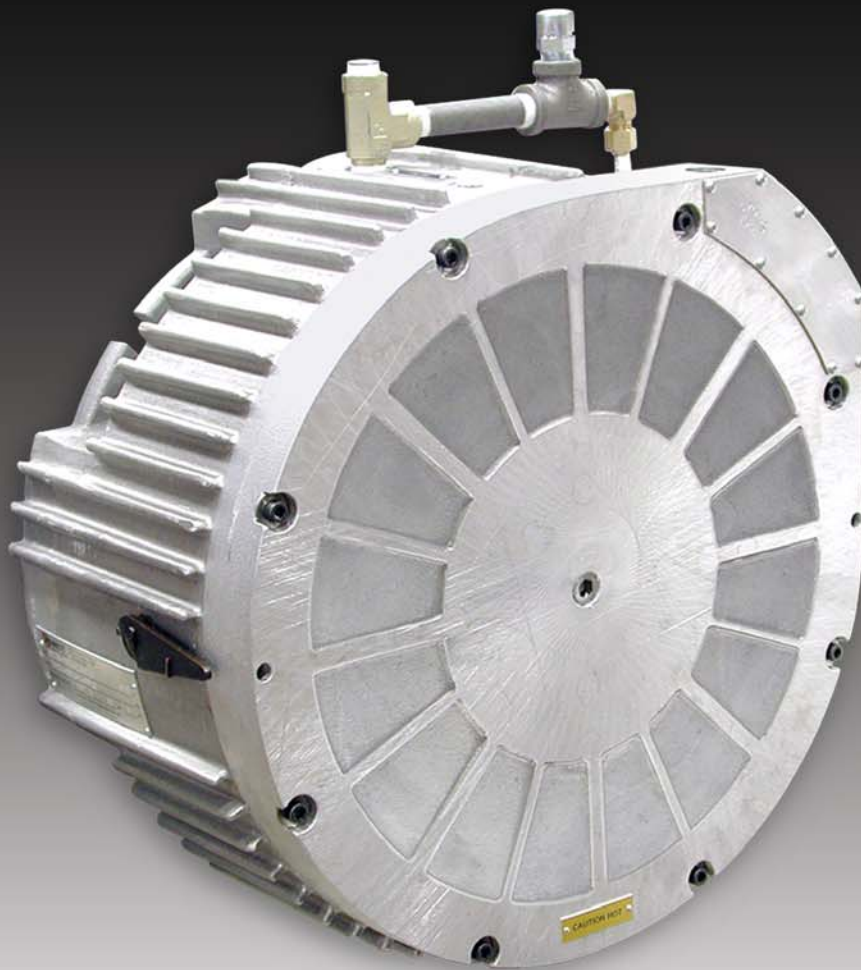


**ELECTRO  
SHEAR®**

**OIL SHEAR MOTOR BRAKES**



*World Class Oil Shear Brake Technology*

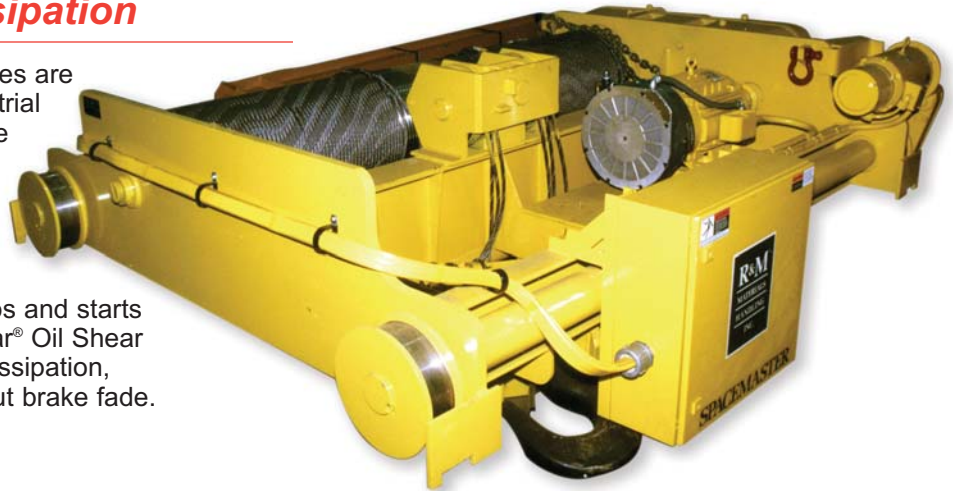


# Electro Shear® Oil Shear Motor Brakes

## High Performance AC Brake Technology, For Superior Heat Dissipation

The Electro Shear® Oil Shear Motor Brakes are proven and reliable in the toughest industrial applications. Midwest Brake has been the leader in oil shear brake technology for over 35 years, offering the highest quality, most reliable brakes available in the market today.

Originally developed for the rigorous stops and starts of automotive transfer lines, Electro Shear® Oil Shear brakes are designed for excellent heat dissipation, which allows for higher cycle rates without brake fade.



## Exceptionally Long Life, Eliminate Frequent Repairs

Electro Shear® dramatically increases brake service life through the advanced, totally encapsulated AC coil technology and the high performance composite friction material.

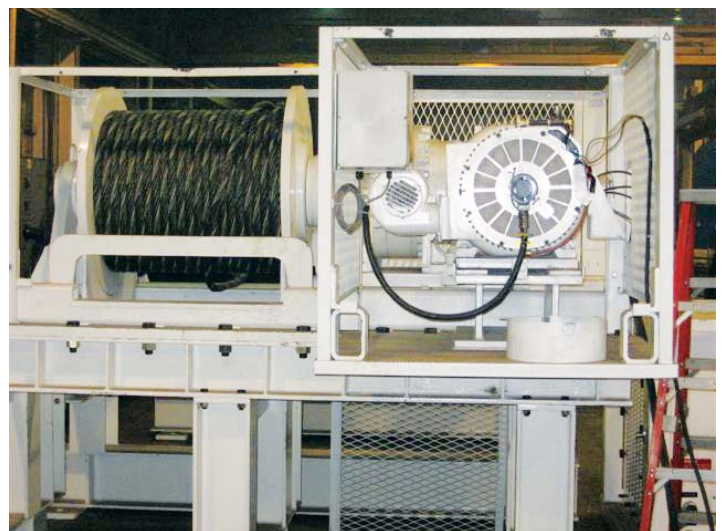
In many cases, the Electro Shear® will outlast and outperform typical dry friction brakes up to 10 to 1. Electro Shear® brakes keep performing where other brakes fail, reducing the need for frequent, costly repairs. Electro Shear® will eliminate downtime and reduce operating costs year after year, cycle after cycle.

## Increased Machine Productivity, Reduced Life Cycle Costs

Oil Shear Brake Technology dramatically increases brake life through superior heat dissipation. Torque is transferred through viscous shearing of oil between multiple friction disc surfaces, resulting in very little friction disc wear.

A continuous oil flow lubricates and cools discs allowing the heat build up from engagement to dissipate through the cast aluminum housing.

Electro Shear® brakes last up to 10 times longer\* than standard dry friction brakes due to the oil shear design and advanced composite friction material.



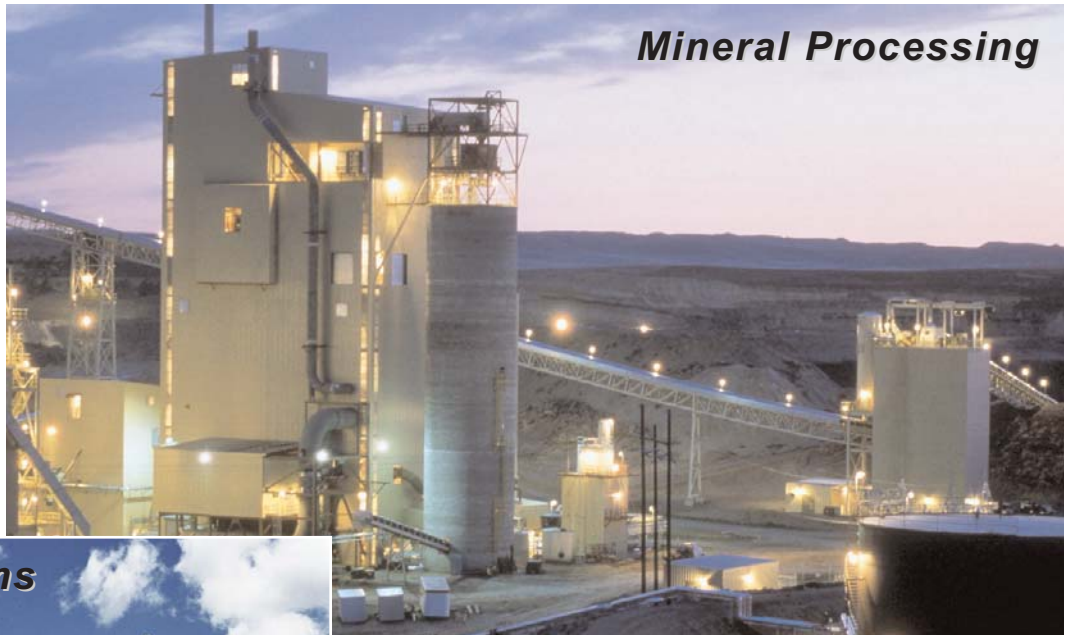
Constant Tension Winch Applications – External Encoder Mounting

# Electro Shear® Oil Shear Motor Brakes

## Proven In Tough Applications

Electro Shear® is proven and reliable for heavy, industrial equipment in dirty, wet production environments where typical dry friction brakes fail.

Specially designed for high cyclic applications, Electro Shear® offers the superior heat dissipation and performance needed to eliminate machine downtime.



## Conveyor Systems



## Electro Shear® Applications

- Cranes & Hoists
- Winches
- Constant Tension Winches
- Rotary Coal Samplers
- Palletizers
- Jet Ways
- Electric Motors
- Dock & Pier Handling Equipment
- Conveyors
- Material Handling Equipment
- Bulk Material Handling
- Machine Tools
- Transfer Equipment
- Cement Block Equipment
- Tire Forming Equipment
- Barge Haulers

## Industries Served

- Automotive
- Aggregates
- Cement
- Coal
- Energy
- Food Processing
- Forest Products
- Lumber
- Marine
- Mineral Processing
- Mining
- Oil & Gas
- Packaging
- Plastics
- Power
- Rail
- Rubber
- Steel

## Cranes & Hoists



# Electro Shear® Oil Shear Motor Brakes

## Oil Shear Operation

Electro Shear® brakes are spring applied, electrically released, multiple disc “**Oil Shear**” brakes. The brake disc stack is immersed in a bath of oil, totally enclosed against moisture and contamination.

Electro Shear® brakes stop the machine load by the shearing of an oil film between alternating which results in virtually **No Wear On The Friction Disc Surfaces.**

The unit is self contained, totally enclosed and utilizes advanced composite friction material discs with steel alternating discs.

## Superior Heat Dissipation

The Electro Shear® brake has a well designed, cast aluminum housing that allows for excellent heat dissipation. A continuous oil flow through the disc stack, cools and lubricates discs allowing the heat build up from engagement to dissipate through the cast aluminum housing.

## Totally Enclosed System

Midwest Brake® is the only company that offers a totally encapsulated AC coil design. This design, coupled with the totally enclosed cast aluminum housing make the brake impervious to outside contaminants, dirt, coolant and water. The Electro Shear® brakes totally enclosed system offers years of maintenance free operation, with minimal downtime.

## Exceptionally Long Disc Stack Life

The inertia of the machine is stopped by the shearing of an oil film between the alternating paper and steel discs. These discs do not contact until over 90 percent of the inertia is absorbed.

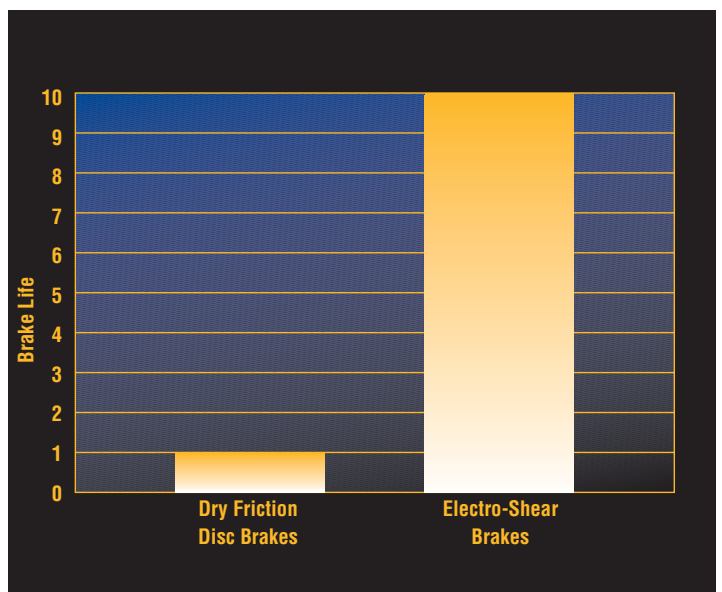
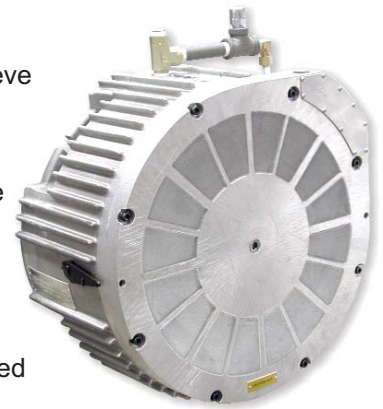
This leads to exceptionally long disc stack life. Static and dynamic torque ratios are nearly the same, resulting in fast, smooth stops.



Model 8725 – Standard Detroit Hoist\*\* Application

## Torque Ratings

Electro Shear® brakes achieve torque through spring pressure and active friction surfaces. The torque rating of each brake model can be varied to meet specific machine requirements by rearranging the disc stack and/or substituting heavier/lighter springs. If needed, brakes can easily be modified at the factory or in the field.



Based on Job Site Studies and Application Case Studies.

# Electro Shear® Oil Shear Motor Brakes

## Fast Response Time

The precision and speed of the 3-phase alternating coil means fast response time and the most accurate repeatability of any machine brake. The Electro Shear® AC coils are extremely efficient, low inertia and provide the fastest response time, typically 10 milliseconds.

## Precise, Smooth Stopping

Oil Shear technology, inherently, offers smooth, precise stopping power consistently over the life of the brake. The friction disc linings do not fade with temperature and since the unit is completely sealed, ambient conditions do not affect torque. Stopping times of 10 – 40 milliseconds can be achieved, this will vary dependent on applications.

## No Adjustment Needed

Electro Shear® brakes are spring set, multiple disc, self adjusting brakes. The advanced composite friction material is designed to minimize disc stack surface wear and requires no adjustment.

## Fail Safe Braking

Electro Shear® brakes are set by multiple springs and released by either a 230, 415, 460, 575 volt AC coil. When current is not present, the brake is engaged by the multiple springs making act as a fail safe brake.

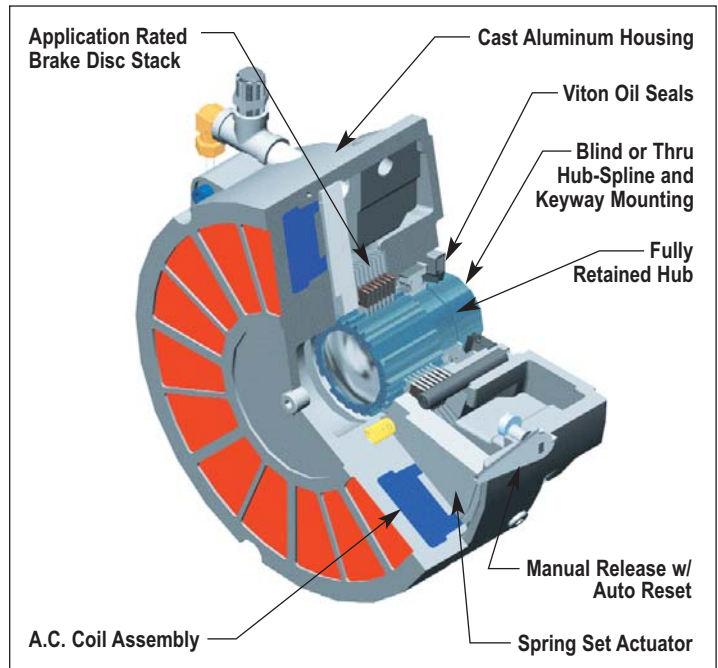
## Simple Installation, One Piece Assembly

Electro Shear® brakes are easily installed on the rear C-flange of a NEMA standard motor. They are shipped from the factory completely assembled and are installed in one, integral piece – **No Loose Pieces, No Assembly Required.**

Installation can be performed quickly and easily in a manner of minutes. Simply secure the brake using the Midwest Brake supplied bolts, make the electrical connections to the AC power source as per the service manual, fill with Type F automatic transmission fluid and the brake is ready for operation.

Electro Shear® is easily fit to accommodate custom mounting configurations including gear boxes, metric motors, double c-face applications, thru shaft applications and many others. Please contact your Midwest Brake representative for application assistance.

## Ultimate Simplicity



## Operating Principle

Three phase, alternating electric current is applied, the actuator is pulled by the energized electromagnetic coil which overcomes the spring pressure. The friction discs are allowed to rotate freely. When the electrical power to the coil is interrupted, the spring pressure mechanically forces the actuator to clamp the disc stack. This develops torque to stop or hold the load.



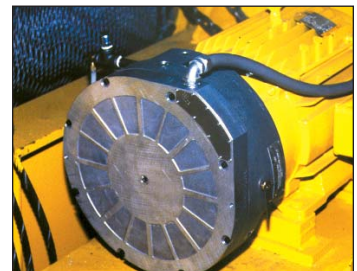
Step 1 – Remove Old Brake



Step 2 – Slide Brake on Motor Shaft



Step 3 – Fill Brake Using Type F Fluid

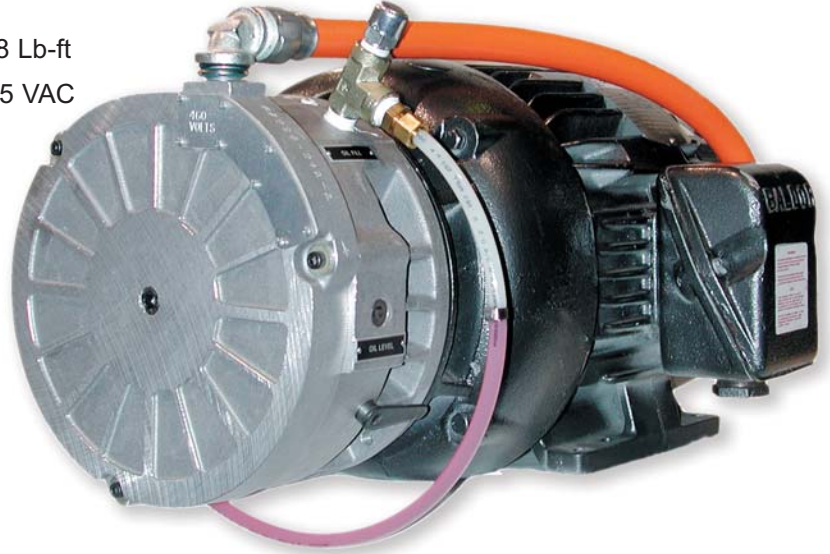


Step 4 – Wire Brake to Motor

# Electro Shear® Oil Shear Motor Brakes

## Electro Shear® Features

- 8 Standard Sizes - Torque Range Up To 1708 Lb-ft
- Electric A.C. Power – 230 VAC, 460 VAC, 575 VAC
- NEMA Motor Standard Mounting Designs
  - 56 C Frame – 449T Frame
  - T-Frame Motors
  - U-Frame Motors
- IEC Motors
- Simple & Easy One Piece Installation
- Spring Set, Fail Safe Brake
- Cast Aluminum Housing
- Self Adjusting
- Horizontal or Vertical Mounting
- Manual Release



## Mounting Easily Customized

- Optional Custom Bores
  - Thru Shaft
  - Metric Bores
  - Tapered Shafts
  - Stepped Shafts
  - Splined Shafts
- Encoder Mounting – External For Easy Access
- Proximity Switch / Brake Release
- Foot Mounted Designs
- Glass Sight Gauge Optional

## Foot Mounted Brakes



Electro Shear® Model 8727 – Foot Mounted Bracket Installations

## Electro Shear® – 8 Standard Sizes



Electro Shear® Model 8749  
Max Torque 1708 Lb-ft



Electro Shear® Model 8739  
Max Torque 885 Lb-ft



Electro Shear® Model 8729  
Max Torque 586 Lb-ft

# Electro Shear® Oil Shear Motor Brakes

## Double C Face Brakes

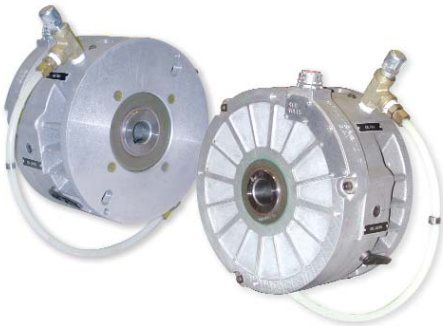


## Gear Box Mounted Brakes



Electro Shear® Model 8725 – 25 Ton Overhead Hoist Installation

## Thru Shaft Brakes



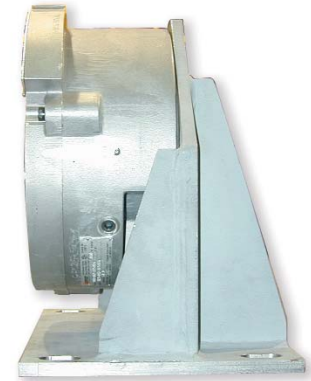
Electro Shear® Brakes Can Accommodate Thru Shafts For Encoder Mounting

## Encoder Brakes



Electro Shear® Can Be Provided With Integral Shaft Extension For Encoder Mounting

## Foot Mounted Brakes



Midwest Brake® Provides Custom Bracket Designs



Electro Shear® Model 8728  
Max Torque 464 Lb-ft



Electro Shear® Model 8727  
Max Torque 239 Lb-ft



Electro Shear® Model 8725  
Max Torque 126 Lb-ft



Electro Shear® Model 8724  
Max Torque 67 Lb-ft



Electro Shear® Model 8722  
Max Torque 25 Lb-ft

# Electro Shear® Oil Shear Motor Brakes

## *Electro Shear® Brakes For Constant Tension Winches*



## *Electro Shear® Brakes For:*

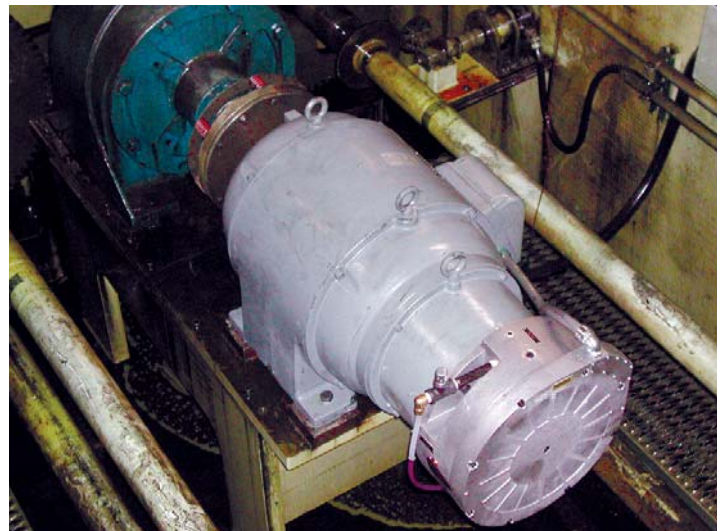
- *Coal & Mining Applications*
- *Material Handling Equipment*
- *Conveyors*

## *Automotive Body Lift*



Model 8729 Installed on an Automotive Body Lift Application

## *Slide Adjustment Motor*

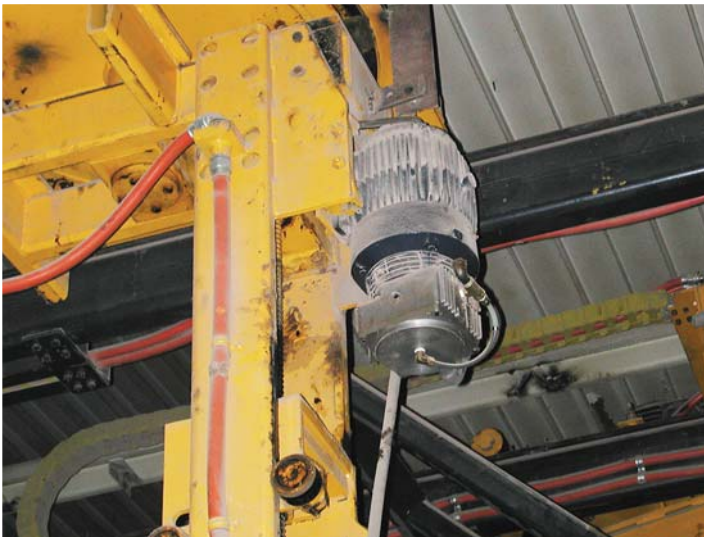
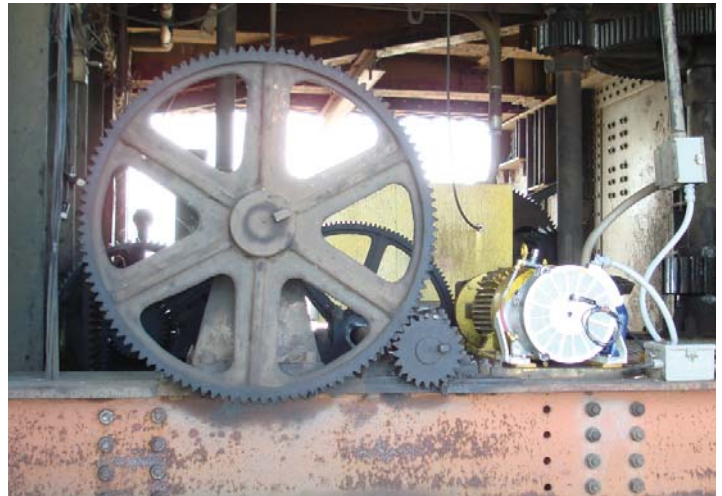
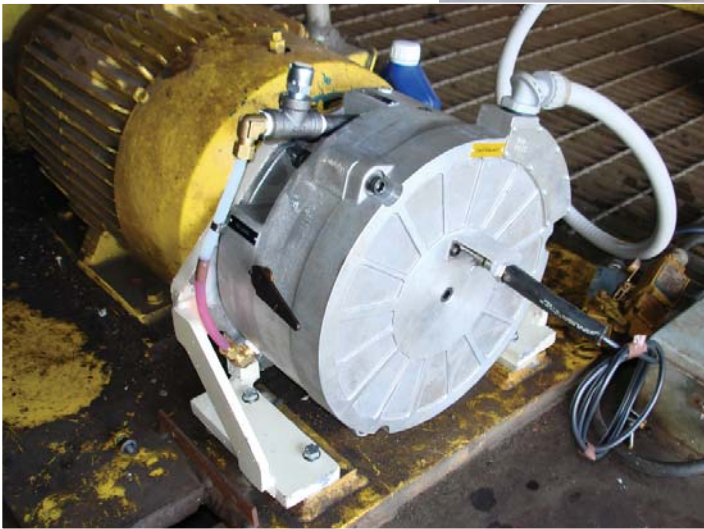


Model 8727 – Slide Adjustment Motor Installation

# Electro Shear® Oil Shear Motor Brakes

## *Electro Shear® Brakes Rail Bridge Applications*

Use Electro Shear® brakes for Rail Bridge applications. Brake shown with foot mounted bracket and proximity switch for brake release feedback.



Model 8722 – Concrete Block Machine Application

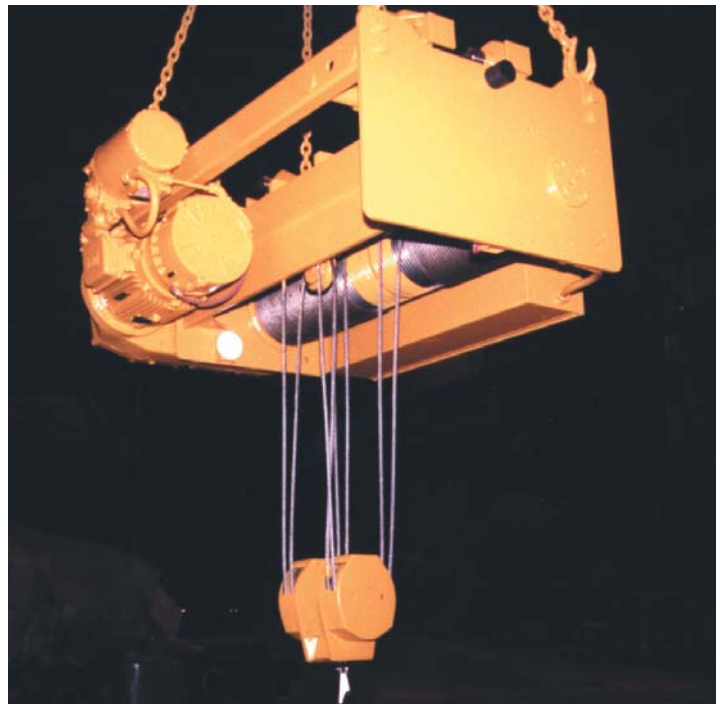
Model 8727 For A Bridge Application

# Electro Shear® Oil Shear Motor Brakes

## Electro Shear® Brakes For Overhead Crane & Hoist Applications

## Installations\*

- Ace World
- Acco Material Handling
- American Monorail
- Detroit Hoist
- Dearborn Crane
- Demag
- Electro Lift
- Hepburg
- KCI Konecranes
- Michigan Crane
- Morris Material Handling
- Orley Meyer
- Lesco
- Low Head Hoists
- P&H Crane
- R&M Crane
- Shepherd Niles
- Shaw Box
- Whiting Crane
- Yale
- Zenar



Model 8725 Installed on a Low Head\* Overhead Crane Application

Model 8725 Installed on a Mono Rail Detroit Hoist\* Application

# Electro Shear® Oil Shear Motor Brakes



Electro Shear® Model 8725 & Model 8724 – 25 Ton Overhead Crane Application – Electro Shear® Brakes Installed On Site At Midwest Brake®

## Material Handling Applications

Whether it is an overhead hoist or portal crane application, Midwest Brake® has the Oil Shear Brake solution. Electro Shear® easily mounts to gear box applications and hoists, indoor or outdoor. We have installed thousands of brakes in both retrofit and new equipment installations.

- **Fast, Simple Installation**
- **One Piece Assembly**
- **No Loose Pieces**
- **Nema, Gear Box and Foot Mount**



Model 8727 – R&M® D-11 Installation



Model 8725 Installed on a Trolley Application

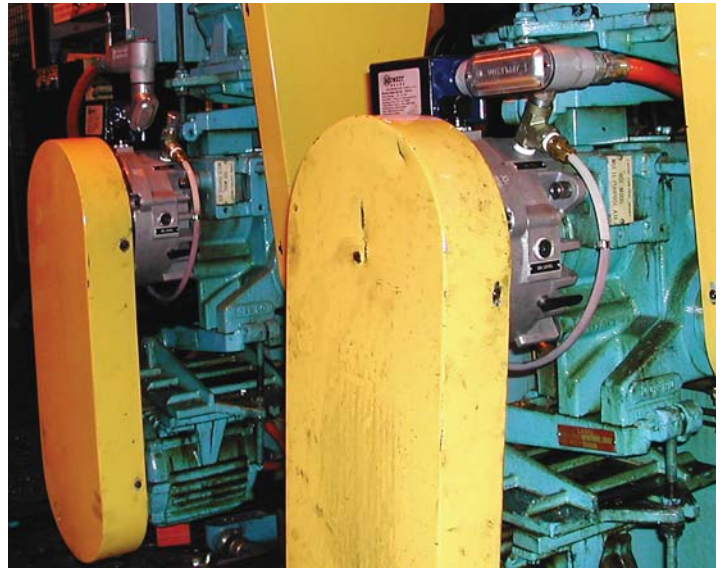


Model 8725 Installed on a R&M® Gearbox D-8 Type Application

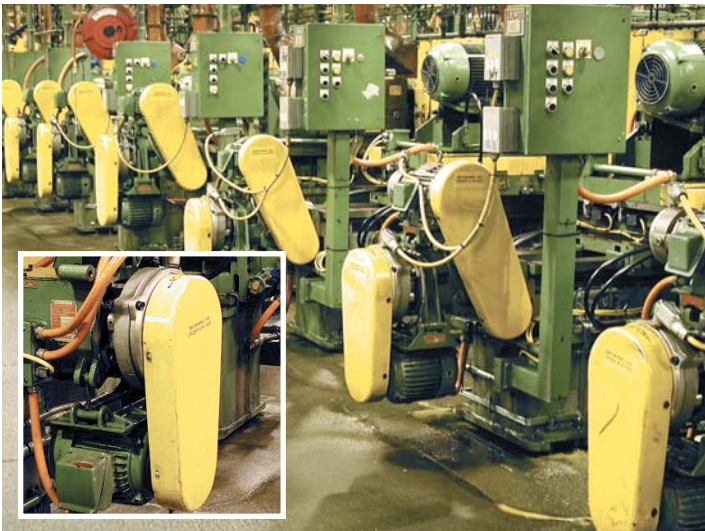
# Electro Shear® Oil Shear Motor Brakes

## *Electro Shear® Brakes For Machine Tool Applications*

- Lamb
- Thyssen
- Buhr
- LaSalle
- Gehring
- Cross Huller
- Kingsbury
- Ingersoll
- Fellows
- R & B
- Ex-Cell-O
- Greenlee
- Comau
- Gidding & Lewis
- Oloffsson



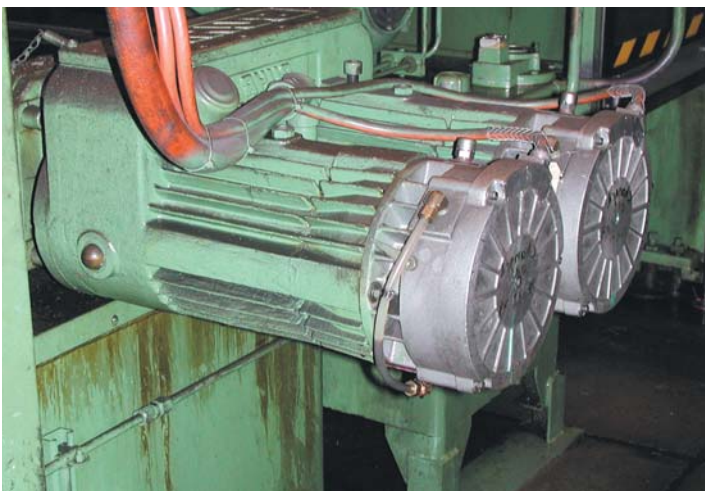
Model 8765 – Lamb\* Mechanical Feed Drive Installations



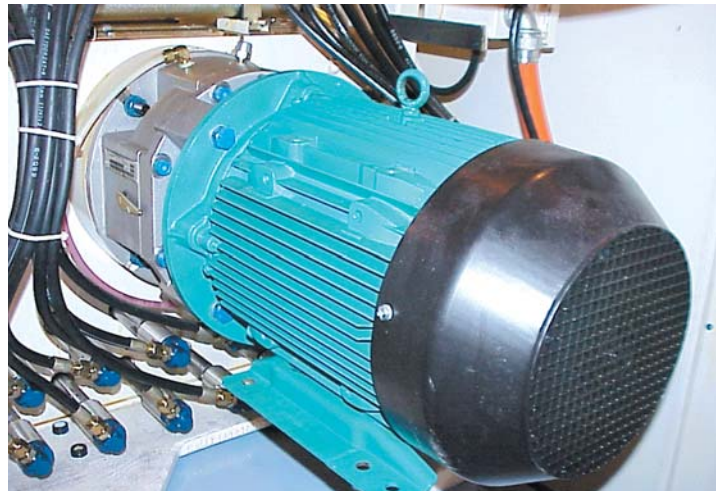
Model 8766 – Lamb\* Side Installations  
(Generation One Brakes In Operation Since 1987)



Model 8766 – Lamb\* Mechanical Feed Drive Installation



Model 8725 – Buhr\* Feed Drive Installation



9800 Series Double "D" Flange Brake I.E.C. Motor on Tap Head Application

# Electro Shear® Oil Shear Motor Brakes

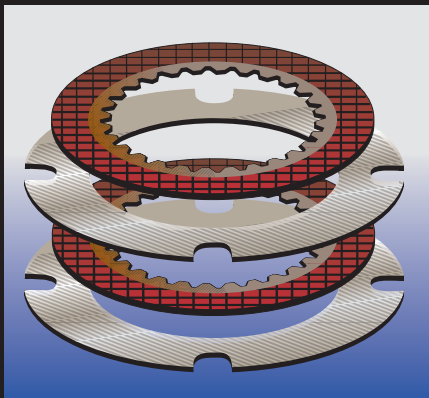
## Oil Shear Principle

Electro Shear® brakes transmit torque through the shearing of oil molecules between alternating paper friction discs and steel wear discs. The viscous shearing of the oil (automatic transmission fluid) dissipates the heat generated from the operation of the Electro Shear® and is carried away by the continuous circulation of the oil.

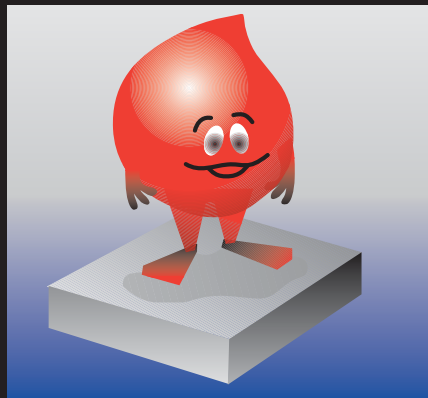
The oil shear principle is the primary reason oil shear brakes offer extremely long service life and superior reliability.

Electro Shear® brakes incorporate a true oil shear into the design where the friction discs are continuously flooded with oil to continually lubricate and cool friction disc surfaces. A true oil shear actually cuts across the film of oil molecules that is maintained between the alternating disc surfaces.

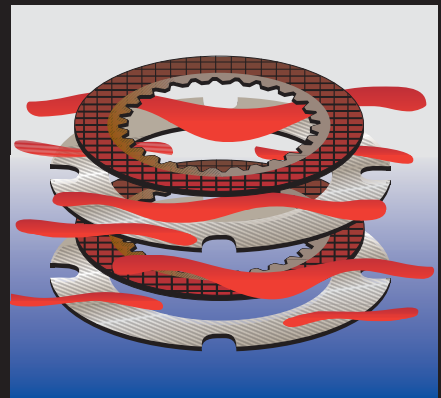
The oil itself acts as efficient power transmission medium, which relieves the mechanical friction surfaces of much of the work. The oil effectively absorbs and dissipates heat while lubricating the brake.



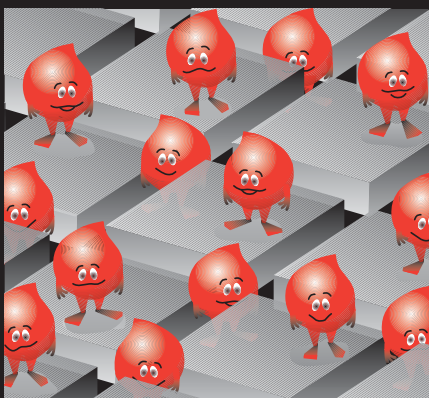
The Electro Shear® brakes contains a stack of alternating discs. The Electro Shear® utilizes advanced composite paper friction discs and steel disc wear plates.



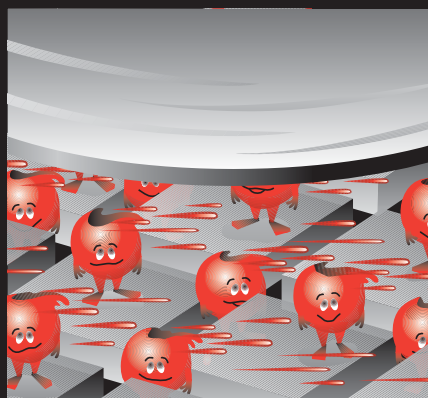
Operation of the Electro Shear® brake begins with an oil film which is made up of multiple oil molecules. Molecules of oil are attracted to one another, giving oil defined viscosity.



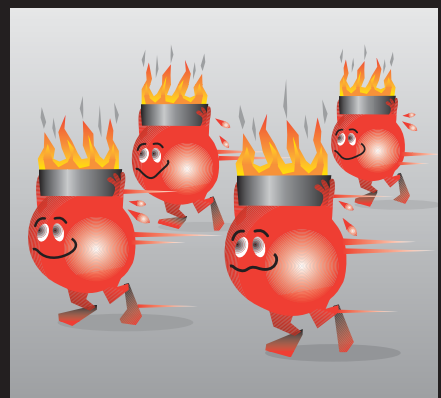
The Electro Shear® brake maintains a film of oil between the friction surfaces, through which torque is transferred.



Oil molecules ride on and between the friction discs and act like small hydrodynamic bearings.



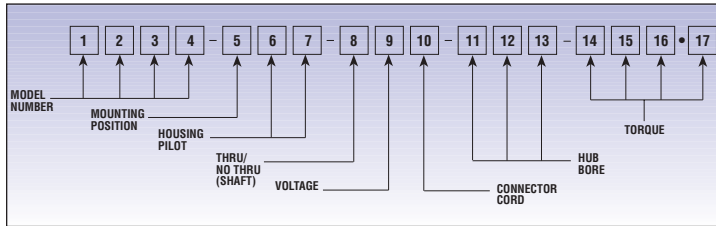
As the friction discs begin to rotate, the opposing drive cuts across the film of oil molecules.



The kinetic energy (heat) generated during operation of the Electro Shear® brake is carried away by the continuous circulation of the oil molecules.

# Electro Shear® Oil Shear Motor Brakes

## To Select Electro-Shear® Brakes Use The Following Table



<b>POSITION #</b> 1, 2, 3, 4	<b>POSITION #</b> 5	<b>POSITION #</b> 6 & 7	<b>POSITION #</b> 8
8722 8728 8724 8729 8725 8739 8727 8749	H = Horizontal T = Vertical Top B = Vertical Bottom	04 = 4.50 Pilot 08 = 8.50 Pilot 10 = 10.50 Pilot 12 = 12.50 Pilot 16 = 16.00 Pilot	T = Thru O = No Thru
<b>POSITION #</b> 9	<b>POSITION #</b> 10	<b>POSITION #</b> 11, 12, 13	<b>POSITION #</b> 14, 15, 16, 17
1 = 460V AC (60Hz) 2 = 230V AC (60Hz) 4 = 415V AC (50Hz) 5 = 575V AC (60Hz)	1 = Nipple 2 = 6ft. Cord 3 = 8ft. Cord 4 = 10ft. Cord	063=5/8 Bore 075=3/4 Bore 138=1-3/8 Bore etc.	Torques

Note: To insure proper application, please contact Midwest Brake for final approval of model number and torque requirements.

## Electro Shear® Technical Specifications

MODEL NUMBER	MOUNTING BOLT CIRCLE	MIN. BORE (Inches)	MAX. BORE (Inches)	ALLOWABLE SHAFT LENGTH (Inches)	STATIC TORQUE Lb-ft	DYNAMIC TORQUE Lb-ft	MAX KE PER ENGAGEMENT Ft-Lbs	INERTIA Lb-ft <sup>2</sup>	WEIGHT Lbs	INPUT VOLTAGE (VAC)	COIL RESISTANCE @ 23° C (OHMS)	HOLDING CURRENT (Amps)
8722	5.875	0.625	1.375	2.50	25	21	19,920 25,255*	0.018	15	230 460 575	31 +/- 20% 125 +/- 20% 194 +/- 20%	0.36 0.18 0.14
8724	7.250	0.875	1.875	2.75	67	56	41,261	0.036	38	230 460 575	12 +/- 20% 59 +/- 20% 92 +/- 20%	0.60 0.30 0.24
8725	7.250 9.000	1.125	1.875	3.75	126*	105	42,791	0.049	60	230 460 575	6 +/- 20% 29.5 +/- 20% 46 +/- 20%*	1.20 0.60 0.48
8727	7.250 9.000 11.000	1.125	1.875	4.63	239	200	59,452	0.061	92	230 460 575	2.4 +/- 20% 9.7 +/- 20% 15 +/- 20%	1.40 0.70 0.56
8728	11.000	1.375	2.625	6.00	464	387	116,681	0.410	120	230 460 575	2.4 +/- 20% 9.7 +/- 20% 15 +/- 20%	1.40 0.70 0.56
8729	11.000	1.625	3.625	6.25	586	489	123,784	1.029	120	230 460 575	2.4 +/- 20% 9.7 +/- 20% 15 +/- 20%	1.40 0.70 0.56
8739	11.000 14.000	1.625	3.625	6.875	885	738	175,771	2.210	175	230 460 575	2.4 +/- 20% 9.7 +/- 20% 15 +/- 20%	1.40 0.70 0.56
8749	14.000 14.500	1.625	4.250	8.688	1424	1708	422,575	12.044	200	230 460 575	2.4 +/- 20% 9.7 +/- 20% 15 +/- 20%	1.40 0.70 0.56

## Available Torques (Lb-ft)

MODEL 8722		MODEL 8724		MODEL 8725		MODEL 8727		MODEL 8728		MODEL 8729		MODEL 8739		MODEL 8749	
Dynamic	Static	Dynamic	Static	Dynamic	Static	Dynamic	Static	Dynamic	Static	Dynamic	Static	Dynamic	Static	Dynamic	Static
2.6	3.1	5.7	6.8	10.0	12.0	50.0	60.0	117.0	140.0	98.0	118.0	148.0	178.0	287.0	344.0
5.1	6.2	11.0	14.0	21.0	25.0	60.0	72.0	136.0	163.0	123.0	148.0	186.0	223.0	358.0	430.0
7.7	9.3	17.0	21.0	31.0	37.0	70.0	84.0	146.0	175.0	137.0	165.0	223.0	267.0	430.0	516.0
15.0	18.0	22.0	26.0	41.0	49.0	80.0	96.0	155.0	186.0	148.0	177.0	260.0	312.0	502.0	602.0
21.0	25.0	23.0	27.0	51.0	62.0	90.0	108.0	170.0	204.0	172.0	207.0	297.0	356.0	573.0	688.0
		29.0	34.0	72.0	86.0	100.0	120.0	175.0	210.0	197.0	236.0	334.0	401.0	645.0	774.0
		34.0	41.0	86.0	103.0	106.0	128.0	193.0	232.0	206.0	247.0	371.0	445.0	716.0	860.0
		40.0	48.0	101.0	121.0	120.0	144.0	204.0	245.0	221.0	266.0	415.0	498.0	801.0	961.0
		56.0	67.0	105.0	126.0	133.0	160.0	233.0	280.0	241.0	289.0	467.0	560.0	901.0	1081.0
						150.0	180.0	238.0	285.0	246.0	295.0	519.0	622.0	1001.0	1201.0
						160.0	192.0	263.0	315.0	275.0	330.0	590.0	708.0	1139.0	1367.0
						166.0	200.0	272.0	326.0	293.0	352.0	664.0	797.0	1281.0	1538.0
						180.0	216.0	292.0	350.0	309.0	371.0	738.0	885.0	1424.0	1708.0
						200.0	239.0	306.0	367.0	344.0	412.0				
								309.0	371.0	391.0	469.0				
								340.0	408.0	440.0	528.0				
								348.0	417.0	489.0	586.0				
								387.0	464.0						

• Options Include: Encoder Brake Mounting  
Proximity Switch  
Thru Shaft  
Foot Mount  
Double C Face

\*\*Special Unit – Consult Factory

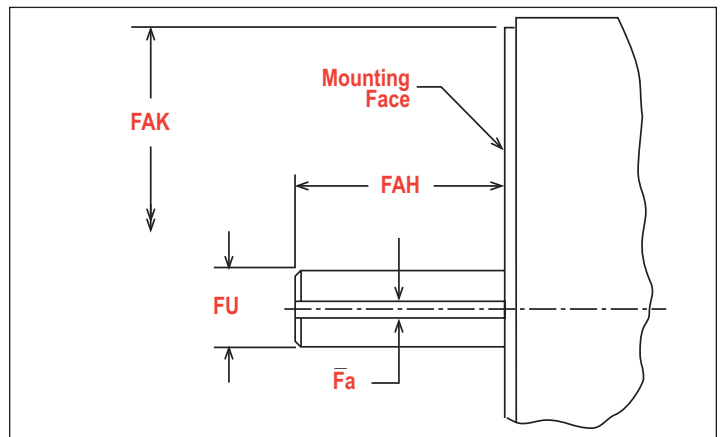
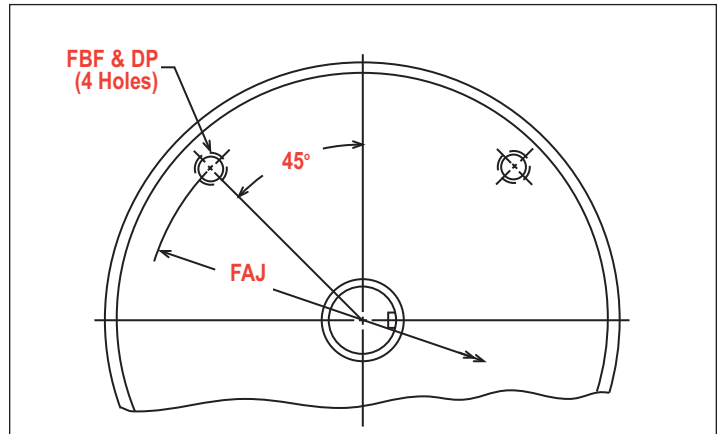
$$\text{Torque Lb-ft} = \frac{\text{Motor HP} \times 5252}{\text{RPM}} \times 1.5$$

Service Factor = 1.5

# Electro Shear® Oil Shear Motor Brakes

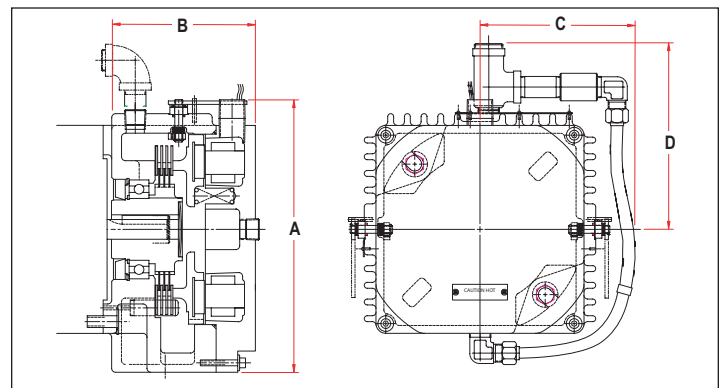
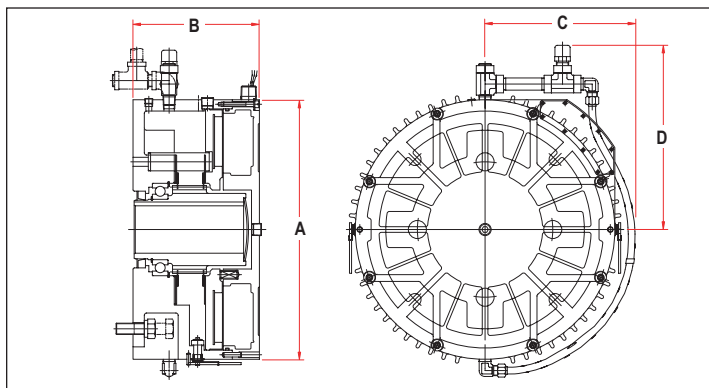
## Standard Motor Mounting Dimensions

FRAME	FU	Fa	FAH	FAK	FAJ	FBF & DP
56 (See Note)	.625 .6245 .8750 .8745	3/16	1.500 To 2.063	4.500	5.875	3/8-16 .56 DP.
143T 145T	.6250 .6245	3/16	1.500	4.500	5.875	3/8-16 .56 DP.
182T 184T	.8750 .8745	3/16	2.125	8.500	7.250	1/2-13 .75 DP.
213T 215T	1.1250 1.1245	1/4	2.500	8.500	7.250	1/2-13 .75 DP.
254T 256T	1.3750 1.3745	5/16	3.125	8.500	7.250	1/2-13 .75 DP.
284T 286T	1.625 1.624	3/8	3.750	10.500	9.000	1/2-13 .75 DP.
324T 326T	1.875 1.874	1/2	4.375	12.500	11.000	5/8-11 .94 DP.
364T 365T	1.875 1.874	1/2	4.375	12.500	11.000	5/8-11 .94 DP.
404T 405T	2.125 2.124	1/2	5.000	12.500	11.000	5/8-11 .94 DP.
182U 184U	.8750 .8745	3/16	2.125	4.500	5.875	3/8-16 .81 DP.
213U 215U	.8750 .8745	3/16	2.000	8.500	7.250	1/2-13 .75 DP.
254U 256U	1.1250 1.1245	1/4	2.750	8.500	7.250	1/2-13 .75 DP.
284U 286U	1.3750 1.3745	5/16	3.500	10.500	9.000	1/2-13 .75 DP.
324U 326U	1.625 1.624	3/8	4.625	12.500	11.000	5/8-11 .94 DP.
364U 365U	1.875 1.874	1/2	5.375	12.500	11.000	5/8-11 .94 DP.
404U 405U	2.125 2.124	1/2	6.125	12.500	11.000	5/8-11 .94 DP.



56 Frame Note: Variation of FU and FAH dimensions are dependent on motor horsepower and R.P. M.

## Envelope Dimensions



DIMENSION	MODEL							
	8724	8725	8727	8728	8729	8739	8749	
A	9.31	11.88	14.38	14.38	14.38	17.25	20.00	
B	5.00	6.13	6.06	5.50	8.25	8.625	10.375	
C	4.75	6.19	7.88	8.25	8.19	9.625	11.00	
D	7.00	6.96	8.08	10.12	10.12	11.625	13.00	

DIMENSION	MODEL
	8722
A	9.31
B	5.00
C	4.75
D	7.00

# Electro Shear® Application Data Sheet

## Request for Quotation

Midwest Brake® is able to provide a quotation of the Electro Shear® brake with a few basic, simple pieces of information.

This standard form is to be filled out. Using this information, torque requirements can be calculated and the proper model will be selected.

Please visit our website to download brochures and application data sheets.

### Contact Information:

Midwest Brake®  
26255 Groesbeck Hwy.  
Warren, MI 48089

Phone: 586.775.3000  
Fax: 586.775.3040

### E-mail:

sales@midwestbrake.com

### Website:

www.midwestbrake.com

Company:		
Address:		
City:	State:	Zip:
Contact:	Title:	
Phone:	Fax:	
E-mail:		

### Motor Information:

Motor Manufacturer*:	Motor Model Number:
Motor Horsepower*:	Voltage**: <input type="checkbox"/> 200V <input type="checkbox"/> 230V <input type="checkbox"/> 460V <input type="checkbox"/> 575V
Motor RPM*:	
Motor Frame (Include Letters):	Does Motor Face Have C-Face on Opposite to the Drive End? <input type="checkbox"/> Yes <input type="checkbox"/> No

\* Required Information Needed To Calculate Torque Requirement For Brake.

\*\* Voltage Required for Pricing.

### If Overhead Crane Application:

Crane Manufacturer:
Brake Location: <input type="checkbox"/> Hoist <input type="checkbox"/> Bridge <input type="checkbox"/> Trolley
Does The Crane Have a Load Brake? <input type="checkbox"/> Yes <input type="checkbox"/> No

### Mounting Dimensions

(Non NEMA Standard Applications)

*If the brake is not mounted on a NEMA Standard Motor shaft or requires a foot mounted brake or adapter, the following general measurements are required. Please fill out diagrams on pages 16-18 where applicable*

Shaft Diameter:
Shaft Keyway:
Length of Shaft:
Mounting Bolt Circle:
Mounting Bolt Size:
Shaft Type: <input type="checkbox"/> Straight <input type="checkbox"/> Stepped <input type="checkbox"/> Tapered <input type="checkbox"/> Spline

### Brake Information:

Brake Manufacturer:
Brake Model Number:
Brake Serial Number:
Existing Brake Torque:
Brake Mounting Position: (Required) <input type="checkbox"/> Horizontal <input type="checkbox"/> Vertical
Is Brake Mounted on Motor? <input type="checkbox"/> Yes <input type="checkbox"/> No

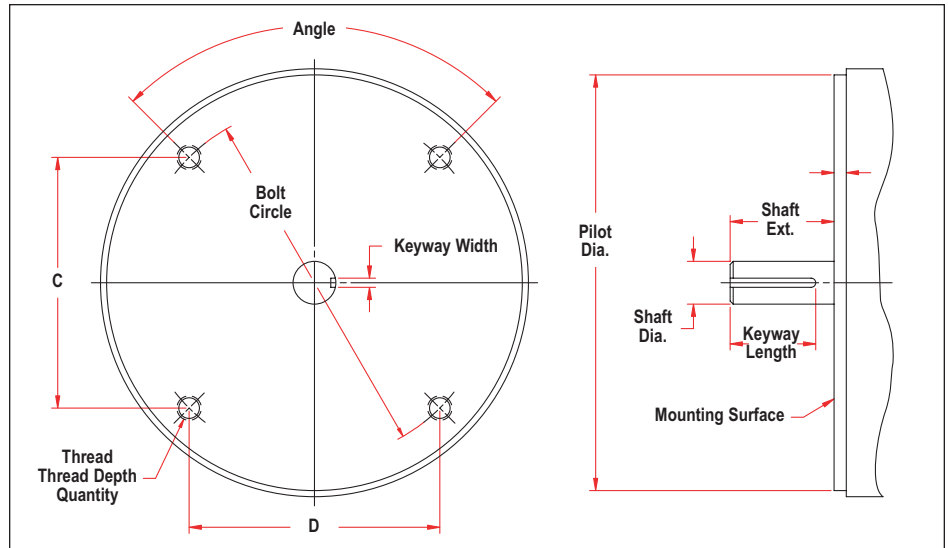
### Gearbox Information:

Is Brake Mounted on a Gear Box? <input type="checkbox"/> Yes <input type="checkbox"/> No
Gearbox Manufacturer:
Gearbox Model Number:

# Electro Shear® Oil Shear Motor Brakes

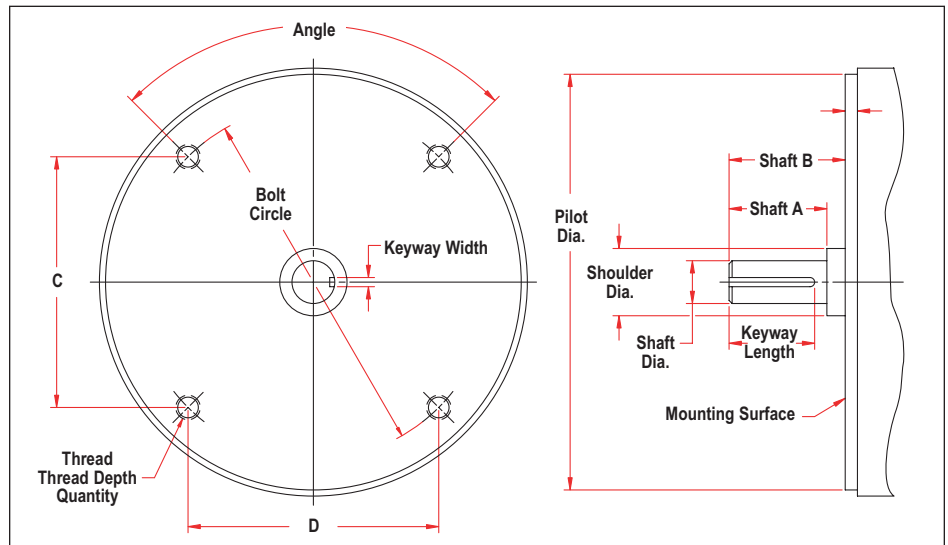
## Straight Shaft

Pilot Diameter: \_\_\_\_\_  
 Shaft Diameter: \_\_\_\_\_  
 Shaft Extension: \_\_\_\_\_  
 Keyway Length: \_\_\_\_\_  
 Keyway Width: \_\_\_\_\_  
 Bolt Circle: \_\_\_\_\_  
 Thread: \_\_\_\_\_  
 Thread Depth: \_\_\_\_\_  
 Bolt Quantity: \_\_\_\_\_  
 Angle: \_\_\_\_\_  
 C: \_\_\_\_\_  
 D: \_\_\_\_\_



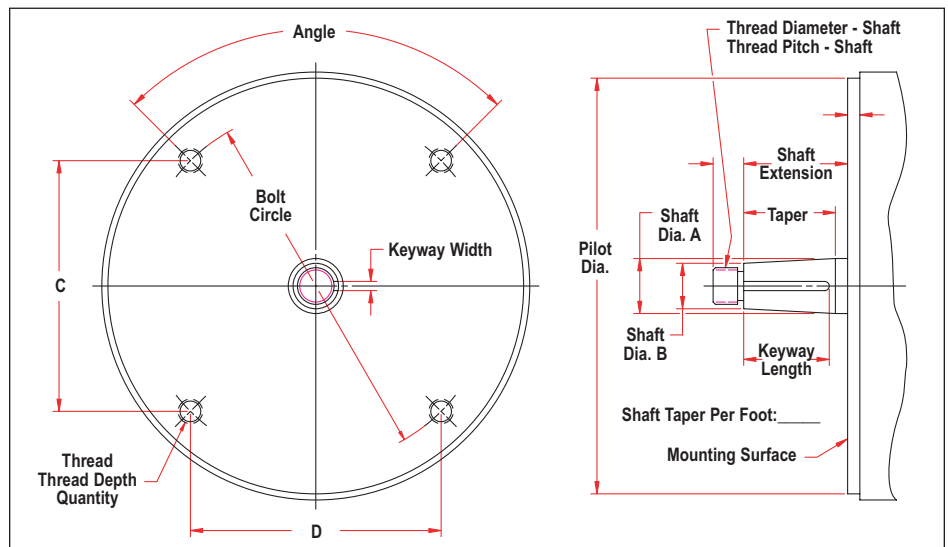
## Step Shaft

Pilot Diameter: \_\_\_\_\_  
 Shaft Diameter: \_\_\_\_\_  
 Shoulder Diameter: \_\_\_\_\_  
 Shaft Length A: \_\_\_\_\_  
 Shaft Length B: \_\_\_\_\_  
 Keyway Length: \_\_\_\_\_  
 Keyway Width: \_\_\_\_\_  
 Bolt Circle: \_\_\_\_\_  
 Thread: \_\_\_\_\_  
 Thread Depth: \_\_\_\_\_  
 Bolt Quantity: \_\_\_\_\_  
 Angle: \_\_\_\_\_  
 C: \_\_\_\_\_  
 D: \_\_\_\_\_



## Tapered Shaft

Pilot Diameter: \_\_\_\_\_  
 Shaft Diameter A: \_\_\_\_\_  
 Shaft Diameter B: \_\_\_\_\_  
 Shaft Extension: \_\_\_\_\_  
 Taper: \_\_\_\_\_  
 Shaft Taper Per Foot: \_\_\_\_\_  
 Keyway Length: \_\_\_\_\_  
 Keyway Width: \_\_\_\_\_  
 Bolt Circle: \_\_\_\_\_  
 Thread: \_\_\_\_\_  
 Thread Depth: \_\_\_\_\_  
 Bolt Quantity: \_\_\_\_\_  
 Angle: \_\_\_\_\_  
 C: \_\_\_\_\_  
 D: \_\_\_\_\_

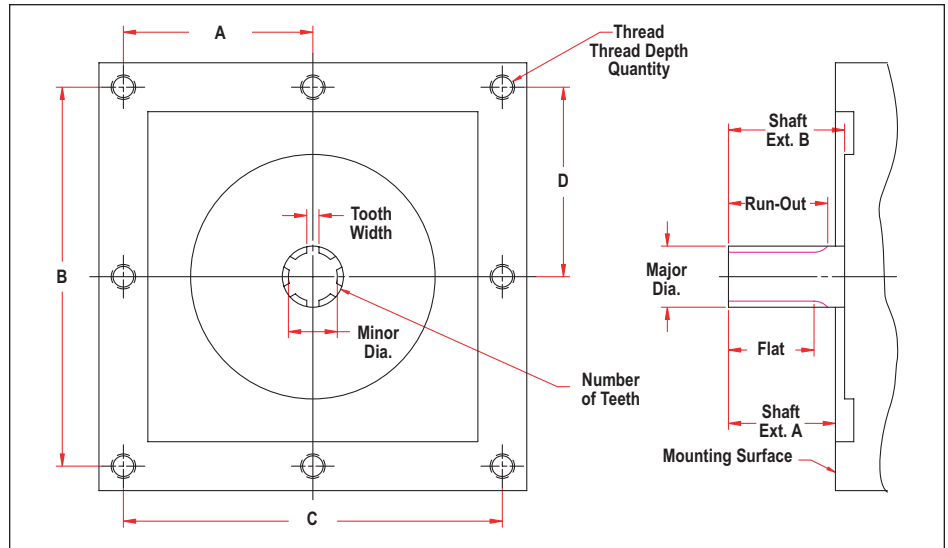


# Electro Shear® Oil Shear Motor Brakes

## Gear Box - Square Housing - Exposed Shaft

Major Diameter: \_\_\_\_\_  
 Minor Diameter: \_\_\_\_\_  
 Tooth Width: \_\_\_\_\_  
 Number of Teeth: \_\_\_\_\_  
 Run Out: \_\_\_\_\_  
 Flat: \_\_\_\_\_  
 Shaft Extension A: \_\_\_\_\_  
 Shaft Extension B: \_\_\_\_\_  
 A: \_\_\_\_\_  
 B: \_\_\_\_\_  
 C: \_\_\_\_\_  
 D: \_\_\_\_\_  
 Thread: \_\_\_\_\_  
 Thread Depth: \_\_\_\_\_  
 Quantity: \_\_\_\_\_

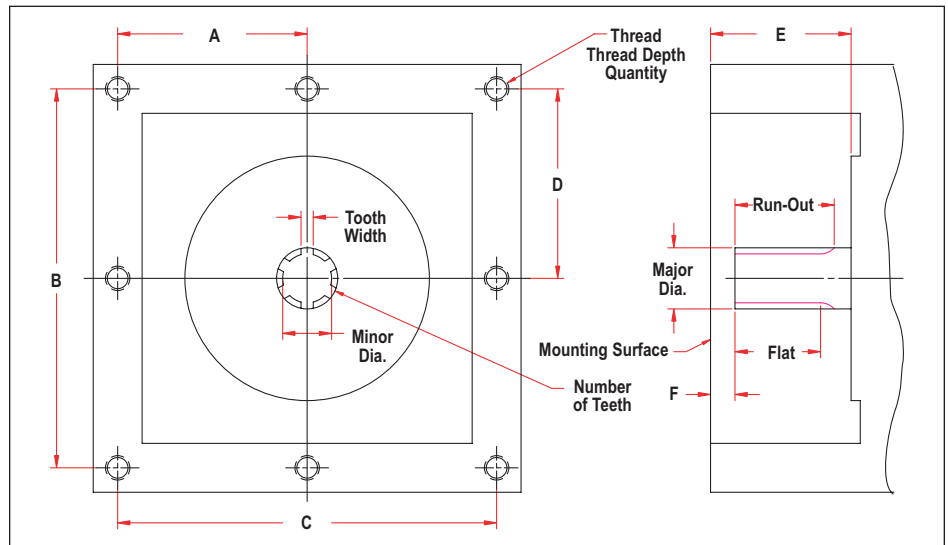
**Note:** Sample hub required for gear data if spline teeth are not straight sided.



## Gear Box - Square Housing - Recessed Shaft

Major Diameter: \_\_\_\_\_  
 Minor Diameter: \_\_\_\_\_  
 Tooth Width: \_\_\_\_\_  
 Number of Teeth: \_\_\_\_\_  
 Run Out: \_\_\_\_\_  
 Flat: \_\_\_\_\_  
 A: \_\_\_\_\_  
 B: \_\_\_\_\_  
 C: \_\_\_\_\_  
 D: \_\_\_\_\_  
 E: \_\_\_\_\_  
 F: \_\_\_\_\_  
 Thread: \_\_\_\_\_  
 Thread Depth: \_\_\_\_\_  
 Quantity: \_\_\_\_\_

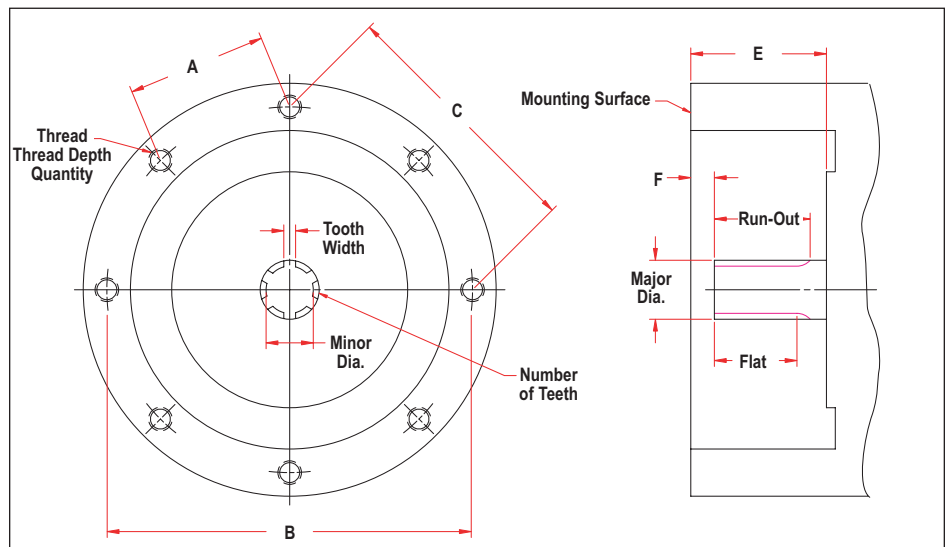
**Note:** Sample hub required for gear data if spline teeth are not straight sided.



## Gear Box - Round Housing - Recessed Shaft

Major Diameter: \_\_\_\_\_  
 Minor Diameter: \_\_\_\_\_  
 Tooth Width: \_\_\_\_\_  
 Number of Teeth: \_\_\_\_\_  
 Run Out: \_\_\_\_\_  
 Flat: \_\_\_\_\_  
 A: \_\_\_\_\_  
 B: \_\_\_\_\_  
 C: \_\_\_\_\_  
 D: \_\_\_\_\_  
 E: \_\_\_\_\_  
 F: \_\_\_\_\_  
 Thread: \_\_\_\_\_  
 Thread Depth: \_\_\_\_\_  
 Quantity: \_\_\_\_\_

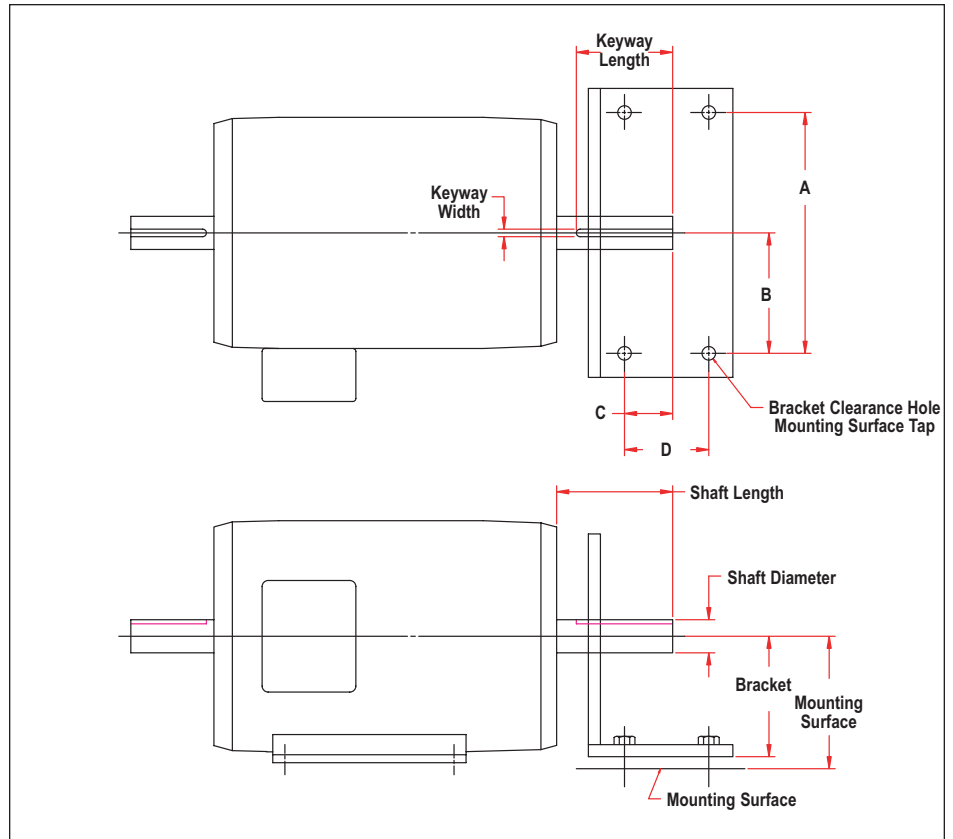
**Note:** Sample hub required for gear data if spline teeth are not straight sided.



# Electro Shear® Oil Shear Motor Brakes

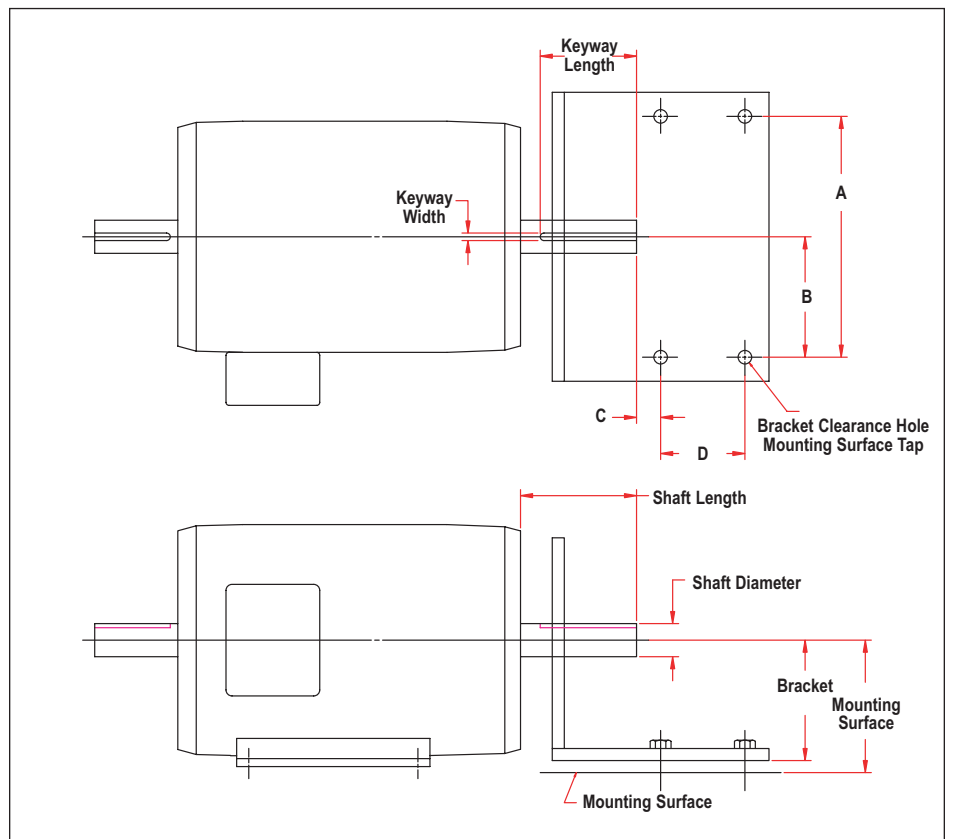
## Foot Mounted Bracket - Straight Shaft - Standard L Bracket

Keyway Length \_\_\_\_\_  
 Keyway Width: \_\_\_\_\_  
 Bracket Clearance Hold: \_\_\_\_\_  
 Mounting Surface Tap: \_\_\_\_\_  
 A: \_\_\_\_\_  
 B: \_\_\_\_\_  
 C: \_\_\_\_\_  
 D: \_\_\_\_\_  
 Shaft Diameter: \_\_\_\_\_  
 Shaft Length: \_\_\_\_\_  
 Bracket: \_\_\_\_\_  
 Mounting Surface: \_\_\_\_\_



## Foot Mounted Bracket - Straight Shaft - Standard L Bracket – Extended

Keyway Length \_\_\_\_\_  
 Keyway Width: \_\_\_\_\_  
 Bracket Clearance Hold: \_\_\_\_\_  
 Mounting Surface Tap: \_\_\_\_\_  
 A: \_\_\_\_\_  
 B: \_\_\_\_\_  
 C: \_\_\_\_\_  
 D: \_\_\_\_\_  
 Shaft Diameter: \_\_\_\_\_  
 Shaft Length: \_\_\_\_\_  
 Bracket: \_\_\_\_\_  
 Mounting Surface: \_\_\_\_\_





26255 Groesbeck Hwy.  
Warren, MI 48089 U.S.A.  
586.775.3000 • 586.775.3040 (Fax)  
800.525.4503 (Toll Free)  
[www.midwestbrake.com](http://www.midwestbrake.com)  
[sales@midwestbrake.com](mailto:sales@midwestbrake.com) (E-mail)